

FREDERIC KELLOGG

PAINTING IN MAINE





The images in this catalog represent works done recently in Maine. The first five are from Great Spruce Head Island (1-4 and the front cover), the next five are from Thomaston in the vicinity of my studio (5-9), and the remainder are from within 50 miles of my studio on Elliot Street.

All have begun with a sketch or full painting from life. Some begin as watercolor sketches in a book I carry with me, like the study for no. 13 (shown at right), of a small unnamed island in a cove off the Damariscotta River.



on the cover:
Distant Hills, watercolor, 9" x 11"



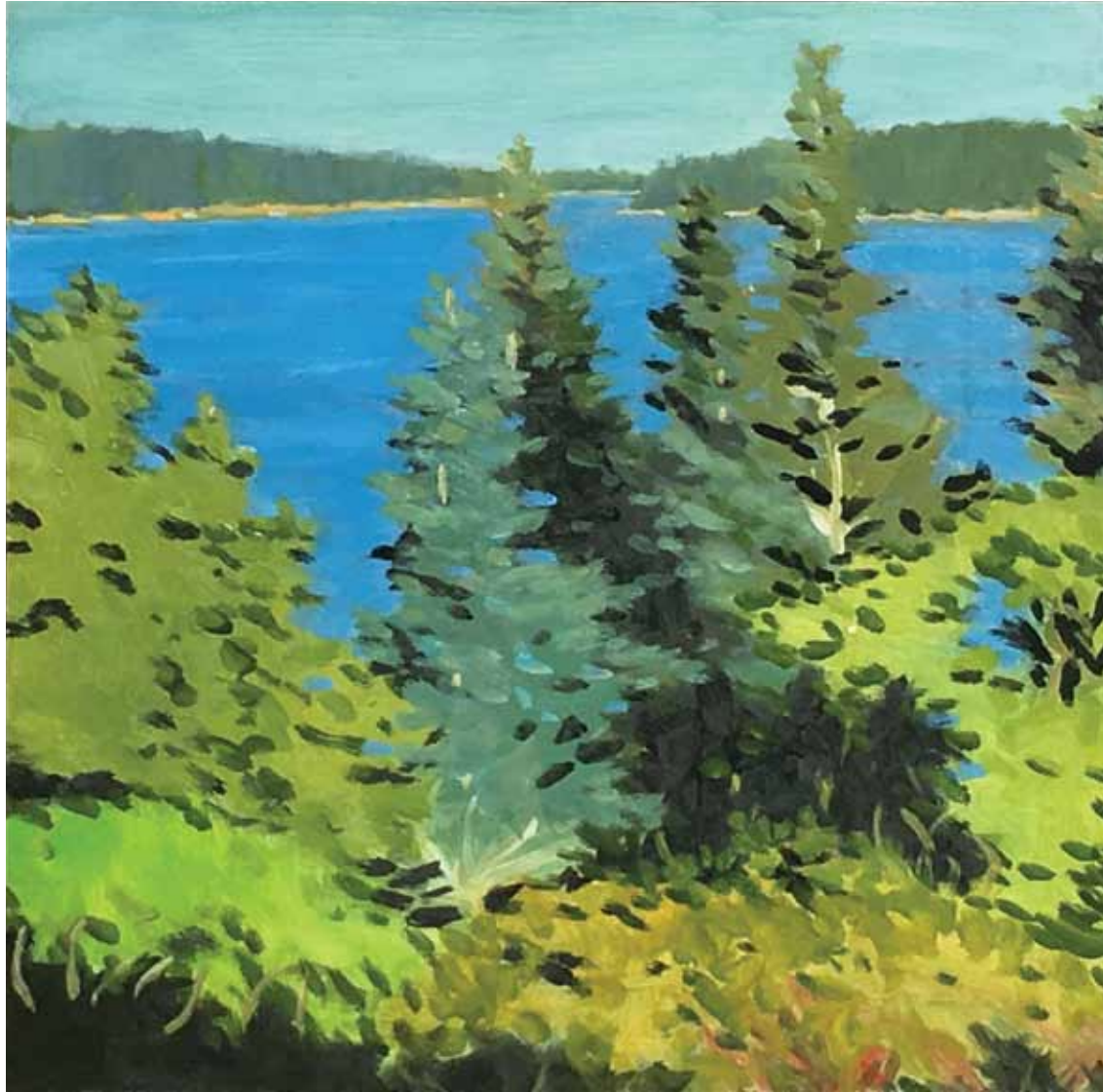
1. *Porter House, Great Spruce Head Island*, oil on canvas, 36" x 24"



2. *Path Through Woods*, oil on canvas, 12" x 24"



3. *The Dreamer*, oil on canvas, 90" x 66"



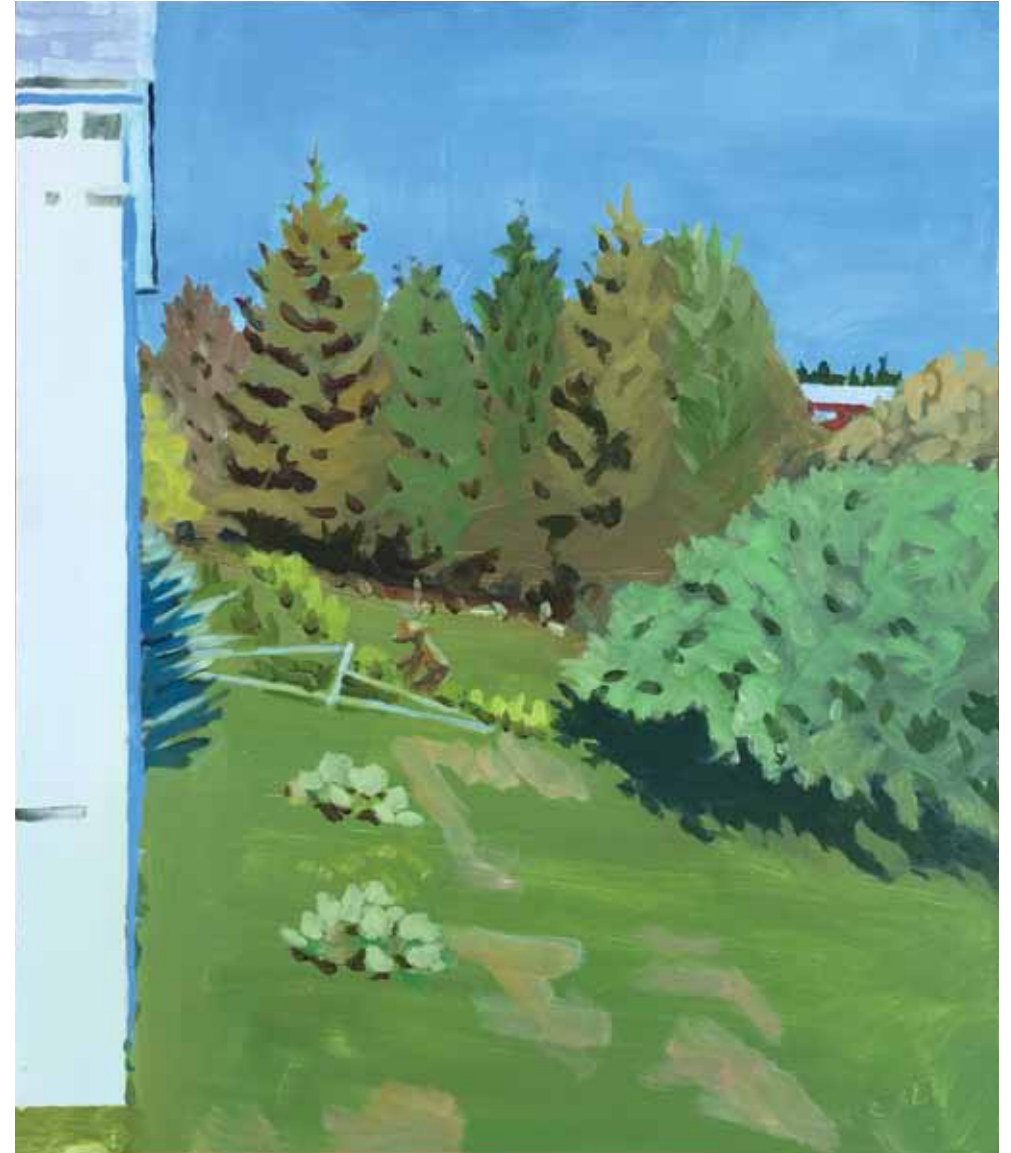
4. *View Through the Trees*, oil on panel, 12" x 12"



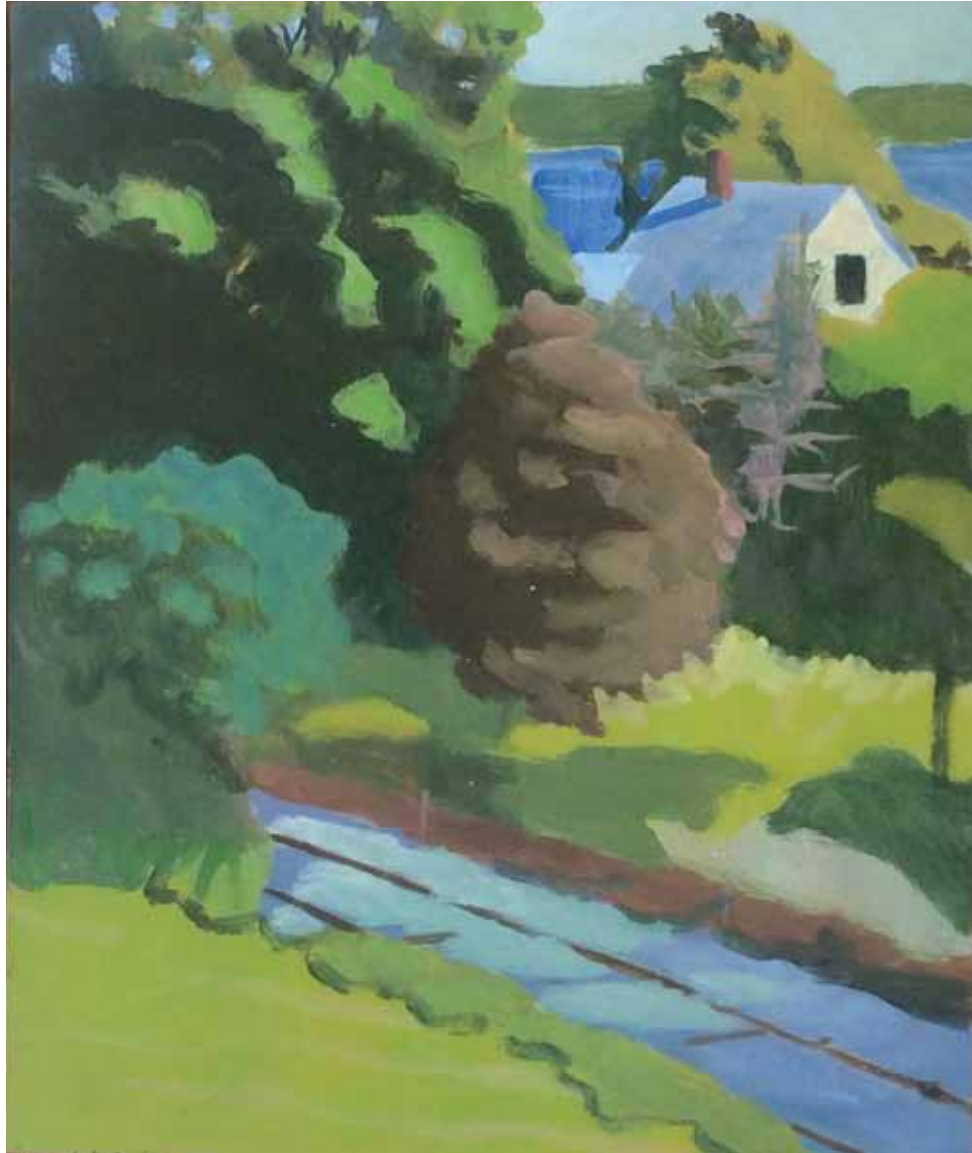
5. *Kitchen Table*, oil on canvas, 36" x 30"



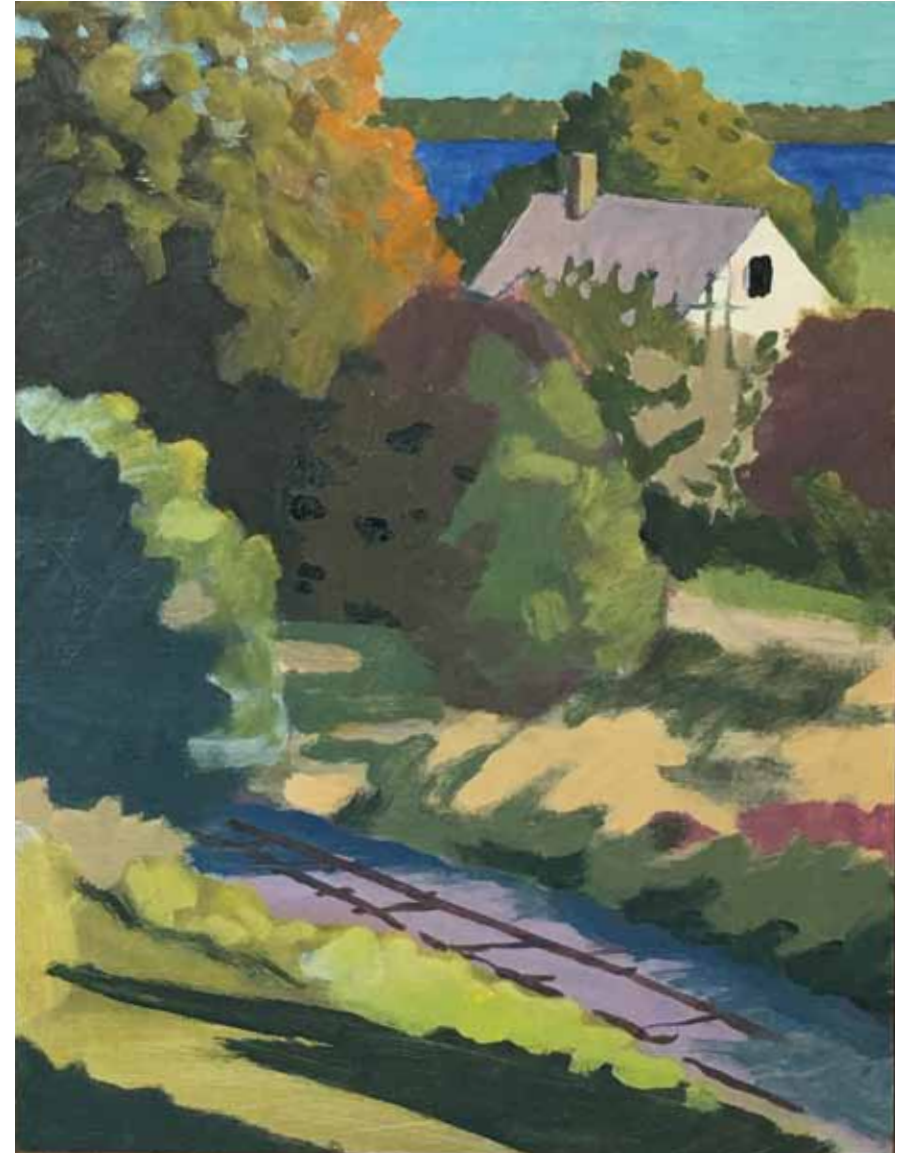
6. *Spring, Elliot Street*, watercolor, 17" x 23"



7. *The Gardener*, oil on panel, 24" x 20"



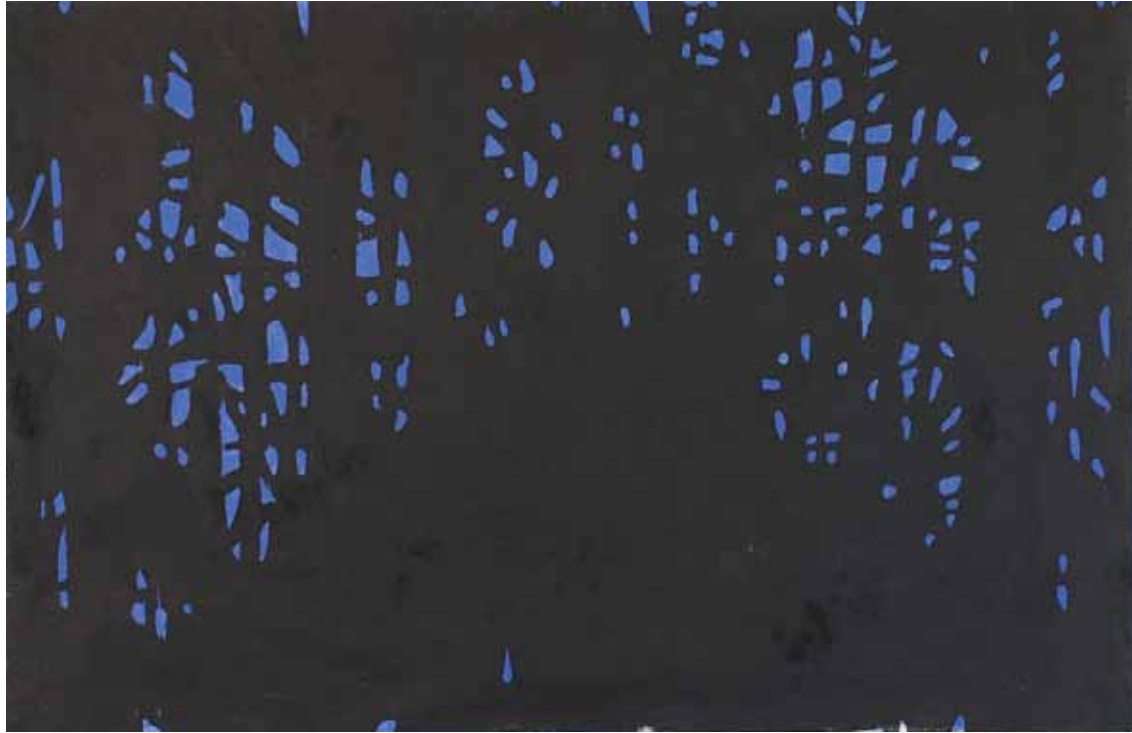
8. *House Between Tracks and River (Summer)*, oil on panel, 14½" x 12"



9. *House Between Tracks and River (Fall)* oil on panel, 14½" x 11"



10. *The Red Boat*, oil on canvas, 34" x 72"



11. *Woods at Dawn*, woodcut, 16" x 24"



12. *Fall, Martinsville*, oil on canvas, 5" x 7"



13. *Little Island*, watercolor, 17" x 23"



14. *Waldoboro*, watercolor, 17" x 23"



15. *Camp Island*, oil on canvas, 18" x 24"



16. *Osprey Returning, Magee Island*, oil on canvas, 22" x 24"



17. *Cove's Edge*, oil on canvas, 24" x 24"



18. *Navy Warship in Rockland Harbor*, watercolor, 9½" x 13"



19. *Monhegan Light*, watercolor, 19" x 23"



20. *Owl's Head Light*, watercolor, 17" x 23"



21. *Savory's Dock*, watercolor, 11½" x 15½"

Caldbeck Gallery
12 Elm Street, Rockland, ME
207-594-5935 | www.caldbeck.com